



Tap Holder with Ratchet

for right- and left-hand-turn

all steel quality

Giramaschi con mandrino

per uso fisso, destro e sinistro

esecuzione acciaio



No.	for Taps	Square mm	Length mm	Weight kg		Art.-No.
1	M 3-10 1/8-3/8	2.4-5.5	85	0,165	10	10001
2	M 5-12 7/32-1/2	4.5-8.0	100	0,310	10	10002
10	M 3-10 1/8-3/8	2.4-5.5	250	0,250	10	10010
20	M 5-12 7/32-1/2	4.5-8.0	300	0,440	10	10020

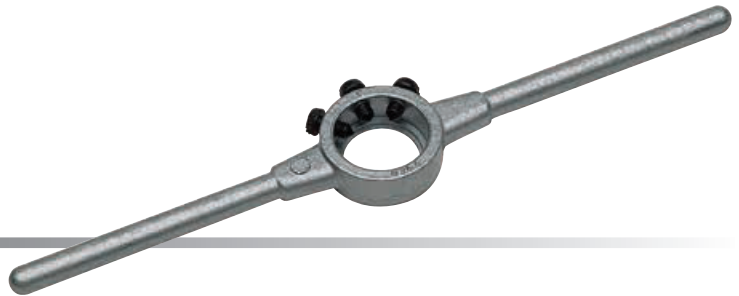
Jaws and Spring for No. 1 und 10	10	10091
Jaws and Spring for No. 2 und 20	10	10092

Die Stocks

Inch - with 3 screws

Portafiliera misura

pollice con 3 vite



Ø	mm	inch/pollice	Length mm	Weight kg		Art.-No.
13/16"	20.6 x 6.35	13/16 x 1/4	200	0,060	5	15520
1"	25.4 x 9.5	1" x 3/8	224	0,100	5	15525
1.5/16"	33.4 x 11.1	1.5/16 x 7/16	270	0,180	5	15533
1.1/2"	38.1 x 12.7	1.1/2 x 1/2	315	0,320	5	15538
2"	50.8 x 15.9	2" x 5/8	560	0,900	1	15550
2.1/4"	57.1 x 17.5	2.1/4 x 11/16	560	0,900	1	15557
2.1/2"	63.5 x 19.0	2.1/2 x 3/4	630	1,400	1	15563
3"	76.2 x 22.2	3" x 7/8	900	2,200	1	15576
3.1/2"	88.9 x 25.4	3.1/2" x 1"	900	3,300	1	15588
4"	101.6 x 25.4	4" x 1"	1000	3,600	1	15599